

Audubon

Vol. 60 No.5

January/February 2021

Jan 9 & Feb 13

Second Saturday Bird Walk in Chisholm Creek Park. Meet in the Great Plains Nature Center parking lot at 8 a.m.

Questions? Tom Ewert, 670-3140, trewert@yahoo.com.

January 19

Monthly program, *Nature Highlights of Scotland and Ireland,* by Bob Gress, 7 p.m. Online

Page 1

**January 23**

Cheney Reservoir field trip. Meet at the Dillon's at 21st & Amidon at 7 a.m. A Kansas Park permit is required.

Leader: Pete Janzen, 519-1970, pete.janzen@sbcglobal.net

Jan 30 & Feb 6

Bald Eagle Winter Hike at Chaplin Nature Center

Page 4

**February 16**

Monthly program, *"CRP is the Bee's Knees: Native Bee Communities,"* by Alex Morphet, 7 p.m. online

Page 1

**February 20**

Birding the Tropics at the Sedgwick County Zoo.

CANCELLED
We have decided this is not safe in current circumstances.

January Meeting

Due to the continuing dangers of Coronavirus, the board has decided that all our programs through May will be online.

For our January program Bob Gress will present "Nature Highlights of Scotland and Ireland."

From rugged coastlines to Caledonian forests to mountain highlands, the Scottish islands maintain some of the most pristine wilderness in the United Kingdom. Wildlife thrives in much of this country of castles, lochs, moors, heaths, glens and firths. The Emerald Isle's physical appeal endures, but by no means is entirely green. The gray limestone Burrens in County Clare and the black peat bogs of the Midlands accent this beautiful landscape. This program highlights Scotland and Ireland's traditional culture, landscapes, rural life and wildlife encountered on a month-long adventure during spring of 2019. Bob Gress is a naturalist, photographer, and birder and is the former director of the Great Plains Nature Center. He holds an M.S. in Biology



Bob Gress

from Emporia State University. Along with David Seibel and Judd Patterson he cofounded the website BirdsInFocus.com which features over 2,100 species worldwide. Since retirement in 2012, he has expanded his interest in world birds while continuing to search for U.S. birds that have eluded him. He has photographed birds and mammals for publications for over 30 years and over 4,500 of his photos have appeared

in a variety of publications including most major nature magazines and more than 50 books. He has coauthored: *Birds of Kansas*, *The Guide to Kansas Birds and Birding Hot Spots* and *Faces of the Great Plains: Prairie Wildlife*. Be sure to check out Bob's bird images at: www.BirdsInFocus.com

The program will be live-streamed January 19 at 7 p.m., and will also be saved so you can watch it at your convenience. You can watch on the Wichita Audubon Facebook page, or on YouTube. The link for our YouTube channel is: www.youtube.com/channel/UCBzA8JCBgw-5aUHVW1IM7jw

You can also find links on wichitaudubon.org/events.

February Meeting

Our February presenter will be Alex Morphey, telling us about native bees. Native bees are important pollinators currently experiencing population declines expected to be most severe in agricultural landscapes such as those found in Kansas and across the Great Plains. These declines are largely linked to habitat fragmentation due to agricultural intensification and pose a serious threat to pollination stability in grassland ecosystems. Restoration efforts aiming to mitigate these losses include the federally supported Conservation Reserve Program (CRP), which aims to create wildlife and pollinator habitat on marginally productive agricultural land. From 2017-2019, we assessed native bee communities on CRP lands across the state of Kansas in order to determine a) the relative benefit of pollinator (high-diversity) vs. low-diversity plantings and b) the effect of cattle grazing on CRP bees.

Alex Morphey is a native bee community ecologist, with a focus on grassland ecosystems in the Great Plains. She received her B.A. in Ecology and Evolutionary Biology from the University of Colorado and graduated from Wichita State University with an M.S. in Biology in 2019. Alex has studied native bee communities of Colorado shortgrass prairies, Kansas grasslands, and Missouri sand prairies. She is currently researching pollinators of the northern Great Plains through the USDA Agricultural Research Service in Sidney, Montana. Her primary interests beyond native bees include plants, sustainable land management, and the conservation of natural ecosystems



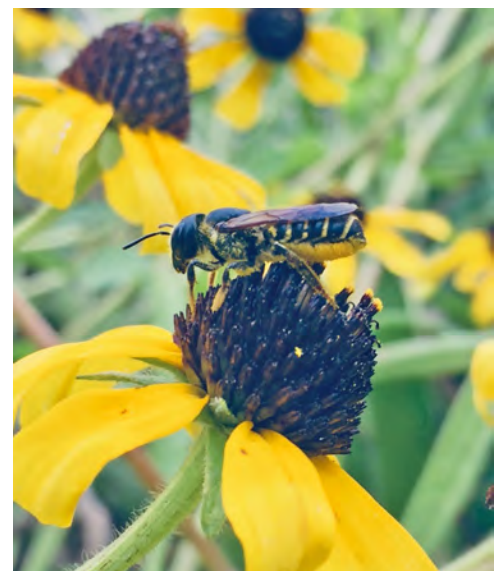
2020-2021 WAS Officers

President	Bob Gress	316-765-2046	bobgress@cox.net
Vice-president	Rachel Roth	316-213- 9527	lilbluestem@gmail.com
Secretary	Barbara Gobbert	316-841-5099	bgobbert@gmail.com
Treasurer	Patty Marlett	316-200-3419	pmarlett@cox.net
Directors	Bill Langley	316-889-5434	78gmouse43@gmail.com
	Mark Nolen	785-346-7213	nolen.mark@gmail.com
	Jeremy Birket	316-371-2829	tceinict@gmail.com
	Rod Wedel	316-215-4362	redb819@sbcglobal.net
	Tom Ewert	316-670-3140	trewert@yahoo.com
	Daniel Housholder	316-648-0434	dhousholder@cox.net
Committee Chairs			
AOK Rep	Tom Ewert	316-670-3140	trewert@yahoo.com
Field trips	Tom Ewert	316-670-3140	trewert@yahoo.com
Hospitality	Sarah Blackmon	316-264-4408	
Membership	Carol Cumberland	316-685-4687	carol.cumberland@swbell.net
Newsletter	Patty Marlett	316-200-3419	pmarlett@mac.com
Programs	Rachel Roth	316-213- 9527	lilbluestem@gmail.com
Naturalist	Shawn Silliman	620-442-4133	cnc@wichitaudubon.org

www.wichitaudubon.org

Send address changes to Carol Cumberland, 1106 Gretchen, Wichita, KS 67206
carol.cumberland@swbell.net, 316-685-4867

The program will be live-streamed February 16 at 7 p.m., and will also be saved so you can watch it at your convenience. You can watch on the Wichita Audubon Facebook page, or on YouTube. The link for our YouTube channel is: www.youtube.com/channel/UCBzA8JCBgw-5aUHVW1IM7jw
You can also find links on wichitaudubon.org/events.



Extended Field Trip Cancelled

We have decided that the Western Kansas trip planned for March 27-29 just cannot be conducted safely, and so we are cancelling with the hope that in the future we can reschedule and watch birds, enjoy each other's company and stay healthy.

By way of compensation we are scheduling a one day field trip on March 28 to Marion County. This will require no overnight stays and we can use masks and social distancing to stay safe. Meet at the city park in Marion at 8 a.m. We will visit the county lake, the reservoir and several other hot spots with possible greater prairie chicken views. Reservations not required but it would be helpful to notify Tom if you plan to attend so that we can make some plans to limit our impact. Leader: Tom Ewert, trewert@yahoo.com, 316-670-3140.

Donors Help Upgrade CNC

The Chaplin Nature Center's old black and white office copier broke down in November and was taken to Galaxie Business Equipment in Winfield for repair. The bad news was it had a major component failure and parts were no longer available for this model. The GREAT NEWS is that Nathan French of Galaxie Business donated a Sharp MX-2610N color copier to the Nature Center. This donation was a major upgrade in quality and functions of the old copier. Thank you, Nathan. Your donation is greatly appreciated.



The Visitors Center restroom vanity tops have had their share of abuse over the last 30 years. Installed when the building was built in 1990 they were looking a bit more than worn. Luckily, Dwight Shoup, of Ark City, donated the materials and labor to replace the vanity tops. The women's restroom is complete and looks fantastic. A big thank you to Dwight for supporting the Chaplin Nature Center.



In Memory of Wallace Champeny

Wally was a very long time member of Wichita Audubon. He was probably best known as the owner of the Old Oxford Mill. He supplied seed for our bird seed sales for many years. He was very active with field trips, and attended every one until his knees made it impossible. Old timers remember that every November we had a field trip to Oxford. Wally would put straw bales in the back of a big grain truck and we would trundle around the countryside on a birding hayrack ride. When Wally died last January he remembered Wichita Audubon in his will. In the next few weeks we will receive a sizable bequest from his estate for use at Chaplin Nature Center. A committee has been appointed to advise the board on the best ways to use this money. We will keep you posted as plans are made. We are very thankful for his many contributions to our organization, and this final gift.



P.O. Box 47607
Wichita, KS 67201

RETURN SERVICE REQUESTED

Non-Profit
Organization
U.S. Postage
PAID
Wichita, Kansas
Permit No. 921

Chaplin Nature Center Programs

*Saturday, January 30 & February 6 , 10 a.m. - Noon
Bald Eagle Winter Hike*

In Kansas, winter is one of the best times to view Bald Eagles. As waterways freeze further north, they migrate into Kansas searching for open water. The program will start with a 15-minute introduction to the history and adaptations of the Bald Eagle. Participants will then take a 1.5-mile hike down to the Arkansas River. Dress for the cold and windy conditions.



For more information about any Chaplin Nature Center programs call Shawn Silliman at 620-442-4133, or e-mail cnc@wichitaaudubon.org. CNC is located 3 miles west of Arkansas City on Hwy 166, north 2 miles on 21st Rd, east 0.6 miles on 272nd Rd.